

1 Decide the Purpose

First you must decide the purpose of the survey. Think about what you need to find out. The students at Hawthorne Elementary want to find out how most students and neighbors want the empty lot to be used.

2 Write Questions

A survey uses questions to gather data. Brainstorm a list of questions to ask people. Then choose the best questions. Leave out any questions that simply state a question in a different way.

Purpose

We want to find out how our neighbors and other students think the empty lot next to our school should be used.

Questions

1. What would you like to see in the empty lot next to Hawthorne School?

Vegetable garden

Flower garden

Bird sanctuary

Junk sculpture

2. Do you have any other ideas or suggestions for the empty lot?

~~3. What should the city do with the empty lot next to Hawthorne School?~~

3 Ask Questions

You will want to ask many people your questions. If you ask only a few people, you won't have a very good idea of what most people think. As you ask people the questions on your survey, you can mark their votes on the sheets with tally marks.

Tallies are an easy way to mark and count votes. One line in a

tally equals one vote. A tally that looks like this **||||** equals five votes. Tallies are easy to count because they can be counted by 5s.

First teams of Hawthorne students surveyed all the students in the school. Then they surveyed each block in the neighborhood.

Survey Tom and Sue

1. What would you like to see in the empty lot next to Hawthorne school?

Vegetable garden **||||**

Flower garden **||||** **||**

Bird sanctuary **||||** **||||** **|**

Junk sculpture park **||||**

2. Do you have any other ideas or suggestions for the empty lot?

Playground

Baseball diamond

Survey

Toshi and Mary

1. What would you like to see in the empty lot next to Hawthorne school?

Vegetable garden **|||**

Flower garden **|**

Bird sanctuary **||||** **||**

Junk sculpture park **||**

2. Do you have any other ideas or suggestions for the empty lot?

Wildlife preserve

Ice-skating rink

Petting zoo

Skateboard park

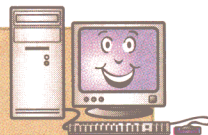
After-school art shack

Carnival

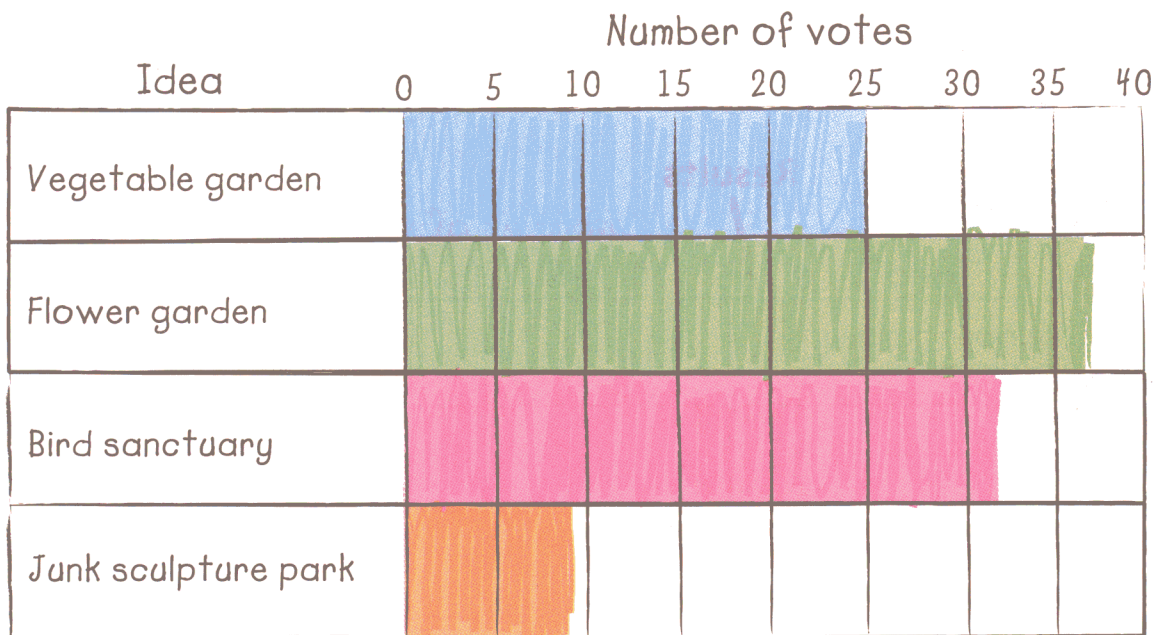
4 Show the Results

Once you have asked enough people the questions in your survey, you should show the results in a way that is easy to read and understand. One good way to show the results is by making a bar graph. The bars are easier to compare than tally marks.

TIP If you decide to use a graph to show the results of your survey, consider using a computer graphing program to make the graph.



The Hawthorne students made this bar graph to show their results. Each rectangle on the graph stands for five votes (or tally marks) on the survey. You can see that the flower garden got the most votes.



USE THIS SKILL

Do a Survey

Do a survey of your classmates to find out which environmental projects they prefer. You can use the list of ideas below to help you. Show the results of your survey in a bar graph.

Ideas for an Environmental Project

- Collect cans, bottles, paper, and plastic for recycling
- Save unwanted classroom papers to use as scratch paper
- Pick up trash on the school grounds or in a nearby park
- Host a "What's One Person's Trash Is Another Person's Treasure" sale
- Make posters urging students to buy recycled products
- Start a campaign to get your school to buy recycled paper

TEST TIP

You might be asked to read the results of a survey on a bar graph when taking a test. Remember that longer bars stand for larger numbers and shorter bars stand for smaller numbers.

Practicing Skill 31

HOW TO Do a Survey

Use pages 61 and 62 to help you do your survey.

Write the question that you asked each of your classmates.

Use the tally sheet below to keep track of the answers you received. Place a tally mark in the second column for each student next to the environmental projects listed. If a student names a project that is not listed, place a tally mark in the row next to the word *Other*.

Environmental Project	Number of Students	Total
Recycle cans, bottles, paper, plastic		
Save paper to use as scratch paper		
Pick up trash at school and in park		
Get school to buy recycled paper		
Host a "Trash/Treasure" sale		
Make recycling posters for school		
Other		

Use the space below to show your results in a bar graph.

Idea	Number of Votes								
	0	5	10	15	20	25	30	35	40
Recycle cans, bottles, paper, plastic									
Save paper to use as scratch paper									
Pick up trash at school and park									
Get school to buy recycled paper									
Host a "Trash/Treasure" sale									
Make recycling posters for school									
Other									