

1-800-334-7344

mheonline.com/directinstruction



Experience the success.

Accelerate student achievement in:
Reading • Math • Language Arts



DIRECT INSTRUCTION METHODOLOGY

What is Direct Instruction?

Direct Instruction is a teaching method extensively tested and proven to turn all students into confident learners including at-risk, ESL, special education, and on grade level students. Direct Instruction gives schools a clear path to achieving annual progress toward universal reading and math proficiency.

The Direct Instruction method is based on two core principles:

1. **All students can learn** when taught correctly, regardless of past history and background.
2. **All teachers can be successful**, given effective teaching materials and presentation techniques.

Every aspect of a Direct Instruction program is designed, tested, and proven to fulfill these essential principles. Lessons are:

- **Explicit**, with purposeful instruction designed to develop skilled and confident learners.
- **Intensive**, allowing teachers to cover more than a year's worth of material in a single year.
- **Consistent**, allowing students to focus on the material they are learning.
- **Interactive**, with quick pacing and group responses that keep all students engaged.





Teaching to Mastery

One important hallmark of Direct Instruction is its focus on teaching to mastery. Before moving from one concept to the next, all students must demonstrate their understanding. This ensures that no student is ever left behind.

Teaching to mastery helps students see the value of what they are learning. Using the skills and concepts they've mastered, students build strategies to learn new information faster. This gives them the confidence to tackle new challenges.

Three Keys to Direct Instruction

Design

Carefully designed programs support students and keep them on track with purposeful instruction that:

- Breaks concepts down to build the pre-skills and prior knowledge that ensure continual progress.
- Models skills and steps so that students know how to approach complex tasks.
- Assesses progress continuously to keep all students on track.

Delivery

Proper delivery allows lessons to flow smoothly and teachers to respond immediately to students' needs. After grouping students with program-specific placement tests, Direct Instruction teachers ensure student success by:

- Following scripted lessons to deliver instruction consistently.
- Using clear, concise language so students grasp concepts the first time they are taught.
- Using quick pacing and group responses to keep all students engaged.
- Implementing planned correction procedures to prevent errors from becoming habits.
- Providing positive reinforcement to motivate students and keep them engaged.

Documentation

Direct Instruction works. Nearly 50 years of research validates the efficacy of this approach for all types of students in various settings.

Explore the Research

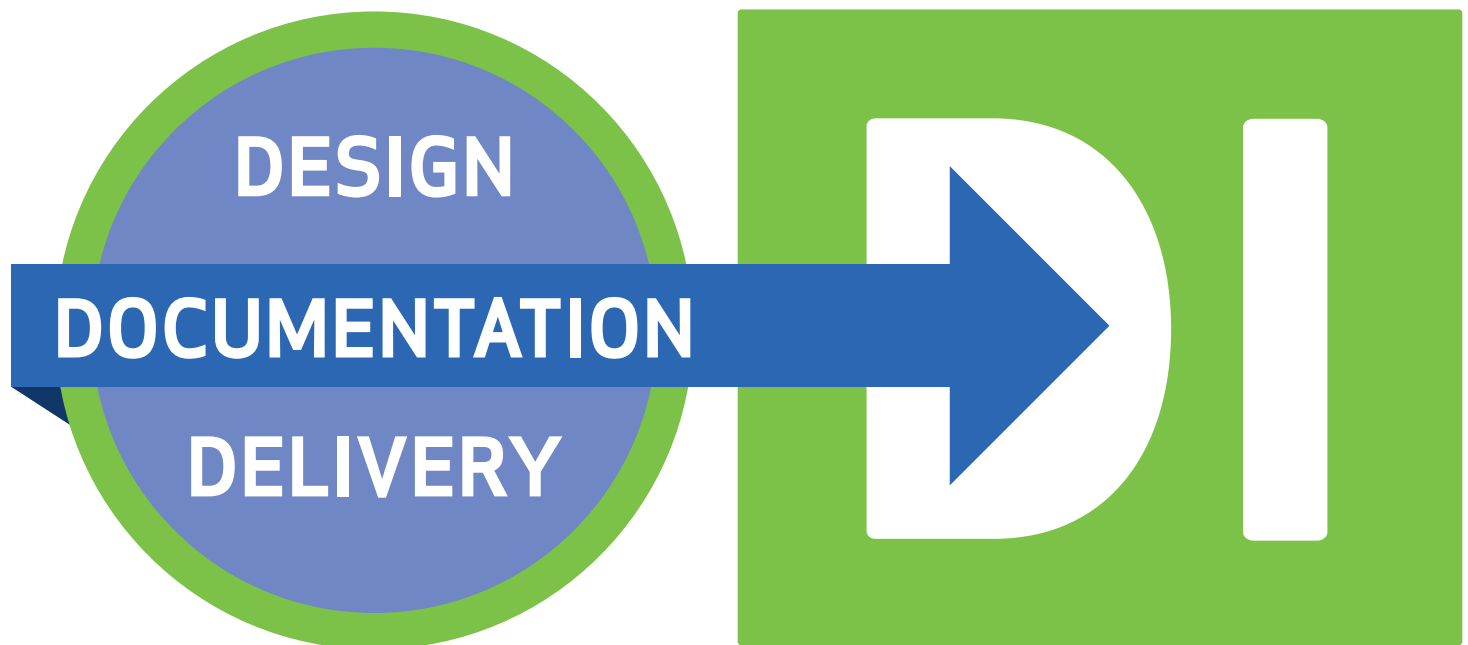
mheonline.com/directinstruction/success

The Power to Turn it Around

Design + Delivery + Documentation = 180°.
That's a complete reversal of direction.

Direct Instruction programs give all students the ability to:

- Achieve at least 80 percent accuracy in every new activity on their first try.
- Work with 100 percent accuracy after error corrections and scaffolding.
- Feel successful every day on every activity they complete.



Thoughtful Design that Accelerates Learning

When authors write a Direct Instruction program, they:

- Identify the skills and concepts students must learn to advance academically.
- Determine the best way to teach them so students can develop “big ideas.”
- Create broad strategies to ensure that students learn content efficiently.
- Field-test and refine every lesson to guarantee effective delivery.

Accurate Placement Ensures a Strong Start

When you group students by skill level, not grade level, they begin the year feeling strong about where they are. In every Direct Instruction program, Placement Tests ensure that all students assigned to a particular level have all the prerequisite skills to succeed.

Positive Reinforcement Inspires Achievement

In Direct Instruction classrooms, teachers play the primary role in shaping students’ attitudes about learning. They present achievable goals and offer specific praise that is relevant to the task at hand.

Because students know immediately when they’ve mastered a skill, they can apply it to the next task, further developing their confidence.



A Focus on Mastery Means Everyone Learns

Before moving from one concept to the next, all students must demonstrate mastery through:

- Group responses
- Individual turns
- Independent work assignments
- Cumulative review activities

When errors occur, the teacher backs up and restarts the activity so everyone can practice the correct response. The process continues until all students are performing the task correctly and independently.

Frequent Assessments Target Instruction

Teachers have a variety of ways to assess progress and regroup students so they are always learning at the right level.

These include:

- Informal assessments, which are performed through daily activities.
- Independent work activities, which develop students' ability to learn and apply their knowledge without guidance.
- Rate and accuracy checks, which measure reading accuracy and fluency and reveal mistakes made during group activities.



You introduce a concept and then you continue to work on it multiple times until students are at mastery. It is very rewarding for kids to see the test and say, 'We can do this!'.

→ **Grade 3 Teacher**
Arthur Academy
Portland, OR

Delivery Techniques that Keep Learning on Track

Signals and Group Responses Hold Students' Attention

The basic routine for every activity includes whole-group unison responding, followed by individual practice. Visual and auditory signals allow teachers to control the pace of the lesson. They tell students when to respond and ensure they get adequate think time beforehand.

When students respond in unison, they:

- Initiate their own responses, becoming active participants in the learning process.
- Have much more time for repetition and practice.
- Achieve skill fluency and automaticity.

Fast Pacing Creates Focused Excitement

Direct Instruction lessons move briskly, with seamless transitions from one activity to the next. Presentation strategies enable teachers to:

- Keep students involved in the lesson.
- Minimize off-task behavior in class.
- Give students more time to practice.
- Achieve measurable learning gains more quickly.

Track Sequencing Supports New Knowledge

Parallel tracks present skills that may extend across multiple lessons. Track sequencing allows students to master several skills at the same time because similar concepts are:

- Introduced gradually so students work within their range of knowledge.
- Applied systematically to expand their range of knowledge over time.
- Practiced continually to ensure mastery.
- Integrated easily with new information for seamless academic progress.

Scripted Lessons Emphasize Content

Detailed and carefully scripted lessons:

- Undergo complete field-testing for clarity and effectiveness, so every minute counts.
- Use clear and consistent instructional language so students can concentrate on learning.

The Critical Role of Field Testing

Direct Instruction program authors test lesson delivery with real teacher and students until instruction, pacing, and interactions flow smoothly. Every lesson you teach has already been proven to work.

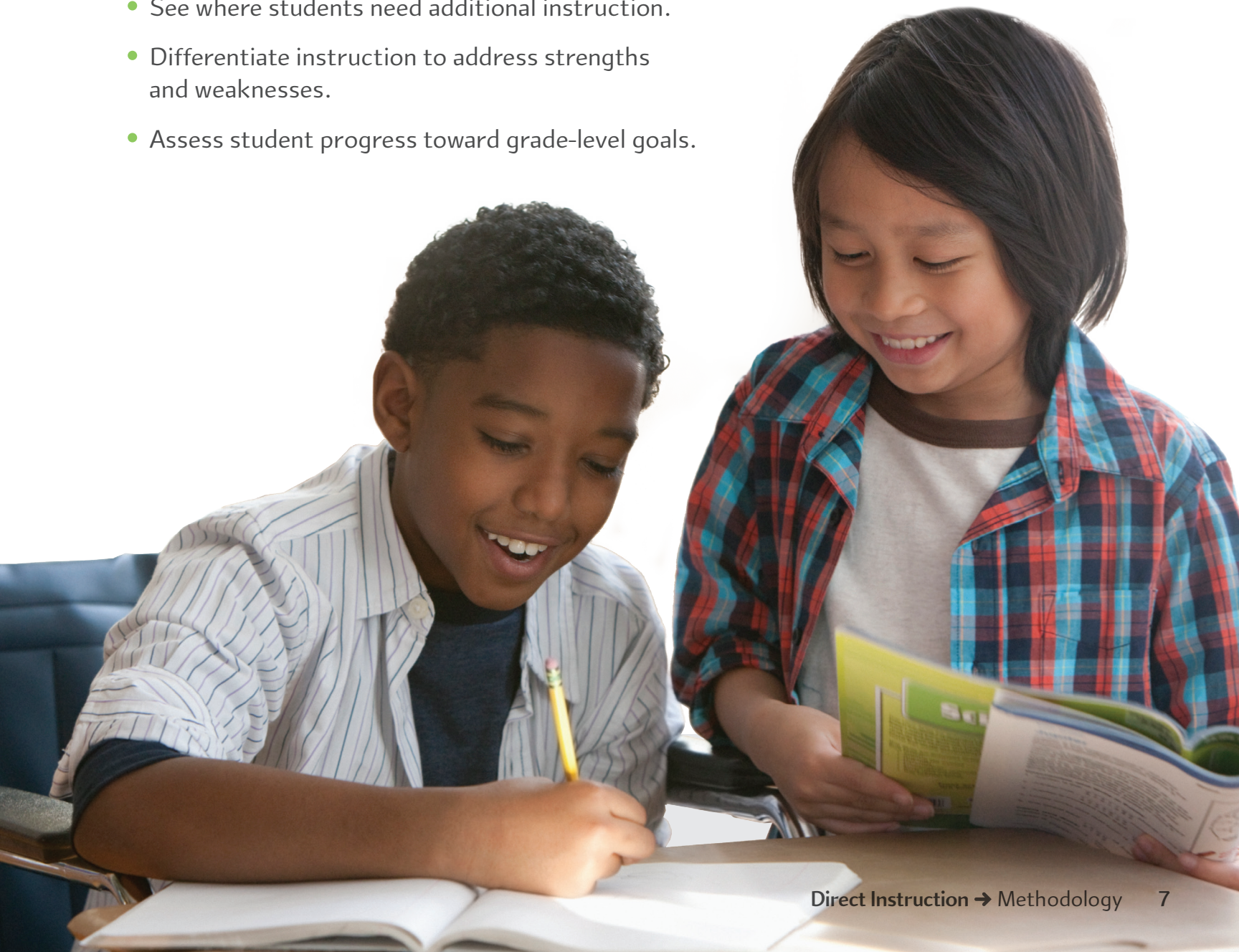
Embedded Routines Keep Lessons Flowing Smoothly

Lessons contain embedded instructional routines and transitions that allow teachers to:

- Introduce new skills and strategies explicitly.
- Eliminate confusion about what to do and when, freeing up more time for instruction.
- Differentiate lessons for English Language Learner (ELL) students, students with behavioral issues, and students with special needs.

Regularly administered Mastery Tests help teachers:

- See where students need additional instruction.
- Differentiate instruction to address strengths and weaknesses.
- Assess student progress toward grade-level goals.



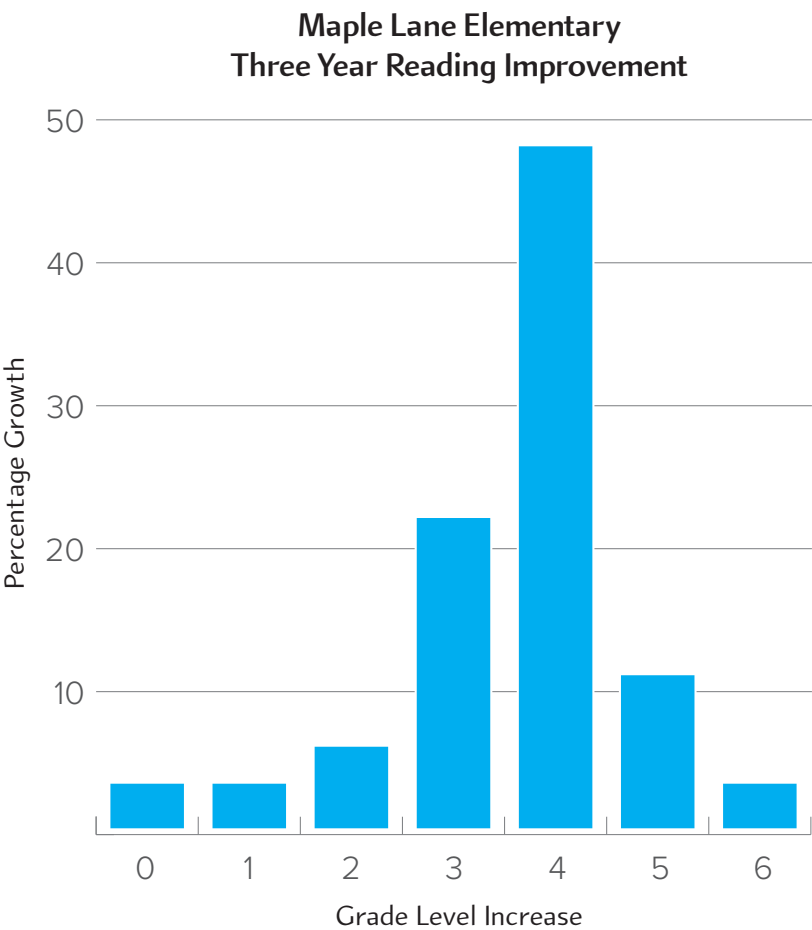
Documentation that Proves It Works

What the Data Shows

Districts across the country are using Direct Instruction to turn their schools around.

Maple Lane Elementary, Rockwell Middle School and Neil Reid High School in Macomb County, MI

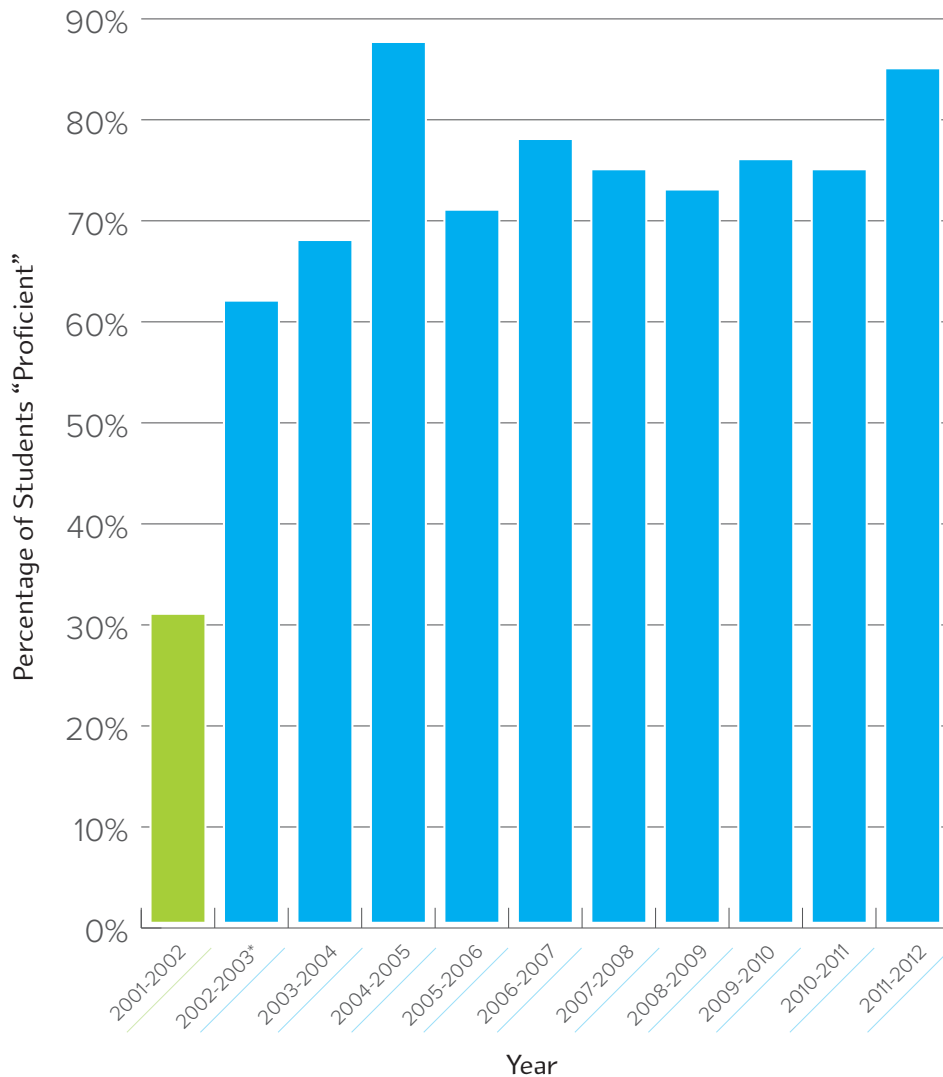
Three years after Maple Lane implemented Direct Instruction reading programs, four of the school’s five most disruptive students achieved a 97–100 percent decrease in their total number of behavioral incidents.



My students, their parents, and I are so pleased with their progress in reading and mathematics. Direct Instruction programs can take some of the credit. I have parents hugging me with tears of pride in their eyes as they report on their child’s progress. For many parents of special needs children, this is the first time they have had good news.”

➔ **Resource Room Teacher**
Davis on Community Schools
Davison, MS

Madison Elementary Iowa Test/ITBS Reading Comprehension



Madison Elementary School in Davenport, IA

Madison [Elementary School] has demonstrated reading proficiency scores of over 70 percent for the last eight years and of over 84 percent last year, far exceeding the state average.



When I first started in September, one kindergarten student couldn't and wouldn't sound out words while reading. He stumbled over every word. After Reading Mastery began, each week I could tell it was working for him ... The 'I Can' mentality [of Direct Instruction] has done wonders for him. He was being monitored for a possible learning disability, but he is no longer in academic jeopardy."

→ **Classroom Teacher**
Cherry Street Elementary School
Panama City, FL

Professional Development that Brings It All Together

We support success in your Direct Instruction classroom with a range of professional development solutions.

Start off Right with Comprehensive Initial Training

- **On-site implementation training**
In-person sessions at your school with expert Curriculum Specialists
- **Online implementation support**
Remote training and support for Direct Instruction implementations

Keep your Skills Sharp with Ongoing Support and Coaching

- **On-site support and coaching for teachers**
In-person sessions where experts model instructional best practices, provide feedback, and suggest strategies for improving student performance
- **On-site support and coaching for administrators and academic coaches**
Curriculum Specialists help identify common problems and work with administrators and coaches to implement solutions and effective strategies
- **On-demand support**
Online teacher tutorials, videos, and support resources that provide best practices for delivering instruction.



They [teachers] become experts on delivery while not having to worry about searching for materials to plan, and they are able to inject their own personalities into the delivery of the program."

→ **Curriculum Director**
Roseville Community Schools
Roseville, MI

Four Qualities of In-Person Training

Your Direct Instruction training experience will be:

- 1. Program-specific.**
Learn strategies for mastering the specific program you'll be teaching
- 2. Real-World.**
Watch videos of Direct Instruction classrooms in action
- 3. Interactive.**
Practice strategies that can be applied to your Direct Instruction classrooms
- 4. Collaborative.**
Discuss research, instructional ideas, and best practices

**Learn More About
Professional Development**
[mheonline.com/directinstruction/
professionaldevelopment](https://mheonline.com/directinstruction/professionaldevelopment)

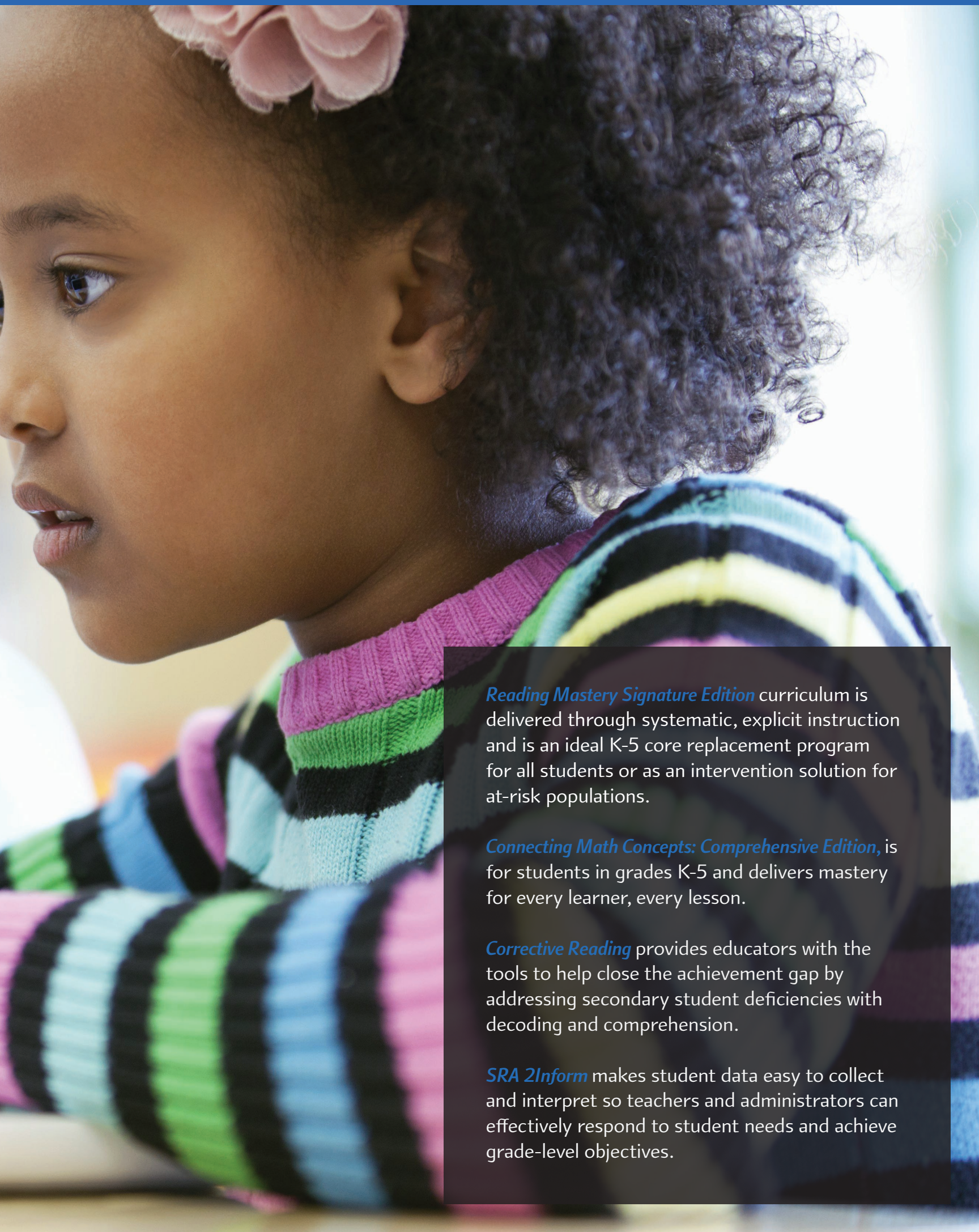




DIRECT

INSTRUCTION

METHODOLOGY



Reading Mastery Signature Edition curriculum is delivered through systematic, explicit instruction and is an ideal K-5 core replacement program for all students or as an intervention solution for at-risk populations.

Connecting Math Concepts: Comprehensive Edition, is for students in grades K-5 and delivers mastery for every learner, every lesson.

Corrective Reading provides educators with the tools to help close the achievement gap by addressing secondary student deficiencies with decoding and comprehension.

SRA 2Inform makes student data easy to collect and interpret so teachers and administrators can effectively respond to student needs and achieve grade-level objectives.