



Reveal MATH™

Reveal the Full Potential
in Every Student.





A CONTINUUM FOR Math Achievement

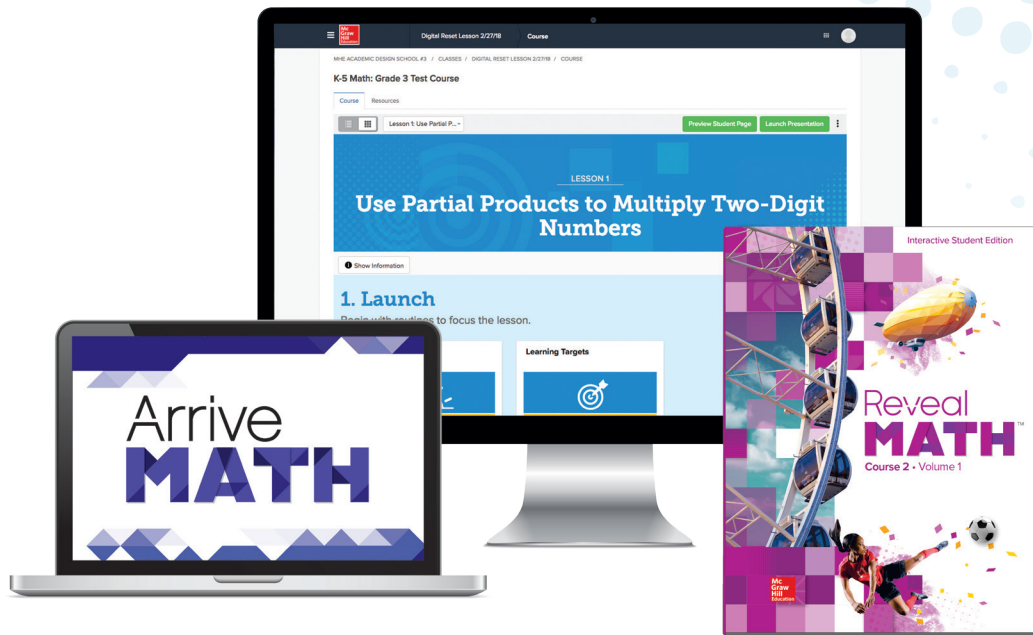
All leaders in education strive to build a community of students who will be successful in school, college, career, and beyond. Achieving this can be complicated and full of competing priorities.

This goal can become a reality with a comprehensive K–12 math solution that delivers consistency and depth to fit a variety of district models. Discover how *Reveal Math™* has been designed with purpose to reveal mathematical thinkers who are ready for future challenges in college and careers.

- **Structure with a Purpose**
- **Learning with a Purpose**
- **Technology with a Purpose**

The
RIGHT MATH,
at the
RIGHT TIME,
for the
RIGHT STUDENT.





Reveal Every Student's Full Potential...

Unlock the combined power of *Reveal Math* and *Arrive Math*™ and experience a full learning system that effortlessly integrates core and intervention instruction. When combined, *Reveal Math* and *Arrive Math* produce revealing results for districts.

Reveal Math and *Arrive Math* provide a flexible course design, robust reporting features, and an intuitive digital experience that drives toward increased performance and purposeful instruction.

A K–12 Core Math Solution

Reveal Math, a complete K–12 core program, empowers educators to uncover the mathematician in every student through powerful exploration, rich discourse, and timely insightful differentiation.

- K–5 Mathematics
- Courses 1, 2, 3
- Algebra 1, Geometry, Algebra 2

Reveal
MATH™

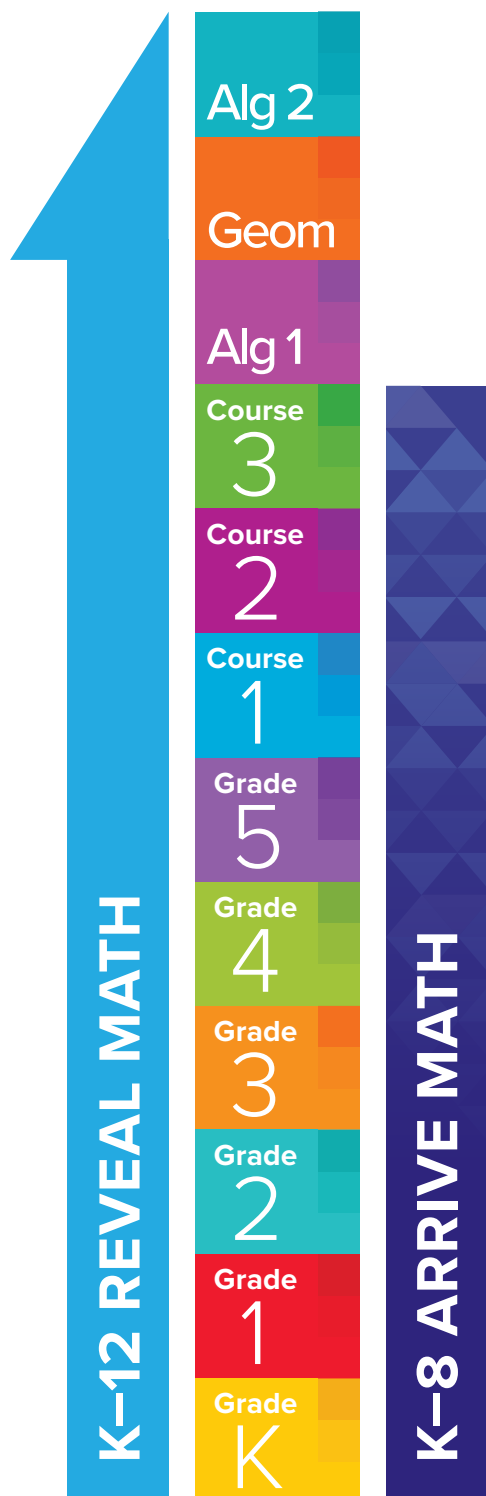
A Connected Intervention Solution

Arrive Math Booster, a supplemental K–8 intervention program, closely aligns with *Reveal Math* to provide integrated support to help address gaps in student understanding.

Arrive
MATH™
BOOSTER

Structure

WITH A PURPOSE



Discover the power of a three-tiered learning system designed to reach every grade level, ability level, and technology level.

Reveal Math and *Arrive Math Core Booster* apply the science of learning and rigorous standards development, purposefully structured to prevent instructional gaps and achieve appropriate grade level success for all students.

Designed on the Science of Learning

Drawing from a broad range of academic and applied classroom research, McGraw-Hill Education's Learning Scientists teamed up with expert advisors to design an instructional model based on the research foundations of:

- productive struggle;
- rich tasks;
- mathematical discourse;
- growth mindset;
- learning target-based formative assessment.

Aligned to Support Grades K-12

Reveal Math's vertical standards alignment is built as a progression from grades K–12 to prevent student learning gaps and ensure that proper foundations are set for the next grade level. Directly aligned to *Reveal Math's* structure, *Arrive Math Core Booster* takes a more targeted approach to standards coverage with explicit skills-based instruction for 100% standards alignment in grades K–8.

Insightful Instruction

Impactful data collection across learning moments ensures that teachers receive consistent insight into student progress and understanding. Data informs differentiation activities within and between *Reveal Math* and *Arrive Math Core Booster*, ensuring that all students are on the right path towards results.

- Data collected during specific points in the lesson are formative and are paired with embedded differentiated instruction throughout.
- As illustrated below, the “Take Another Look” in K–8 courses provides a reteach opportunity and produces a data point to help determine whether a student would benefit from more explicit instruction with *Arrive Math core Booster* intervention support.

Reveal Math Lesson



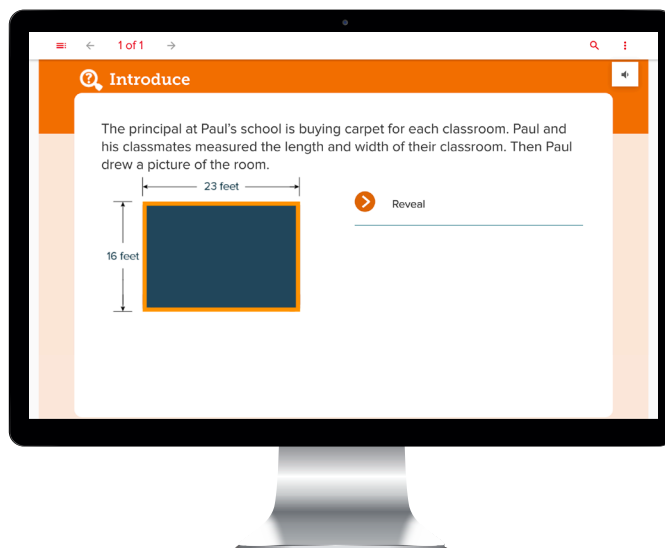
Developed
with input from
HUNDREDS
of educators
across the
country.

Learning WITH A PURPOSE

Developing a culture of growth mindset is a purposeful and strategic choice. McGraw-Hill Education is proud to be an educational partner in the development of confident, critical-thinkers and real-world problem solvers who are ready for success.

Productive Struggle

Gives students exploration opportunities needed to develop deep conceptual understanding that bridges to procedural fluency, resulting in higher mathematics achievement. With content designed to promote growth mindset, *Reveal Math* helps students develop habits of mind that benefit students beyond the mathematics classroom.



Grade 4 Lesson



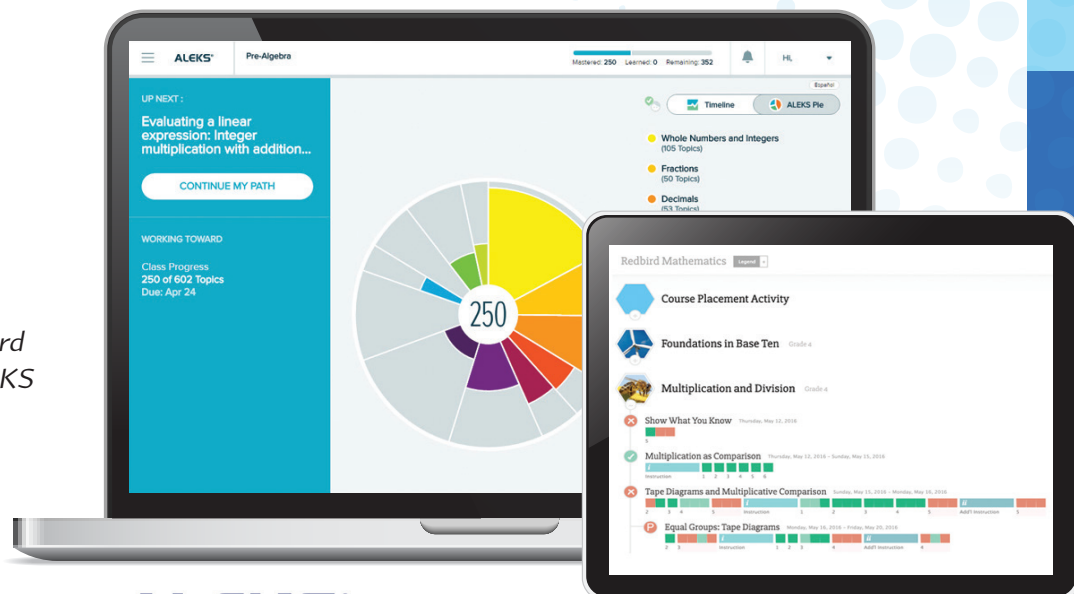
Algebra 1 Lesson

Meaningful Math Connections

Provides content relevant to students' lives which gives them a reason to expand their math thinking and apply the mathematics to other subject areas and real-world situations. Ongoing collaboration opportunities set the foundation for a learning environment that builds communication and learning integrity.

Targeted Personalized Learning

Enhance the *Reveal Math* experience by adding the adaptive technology of *Redbird Mathematics* in K–5 and *ALEKS* in 6–12.

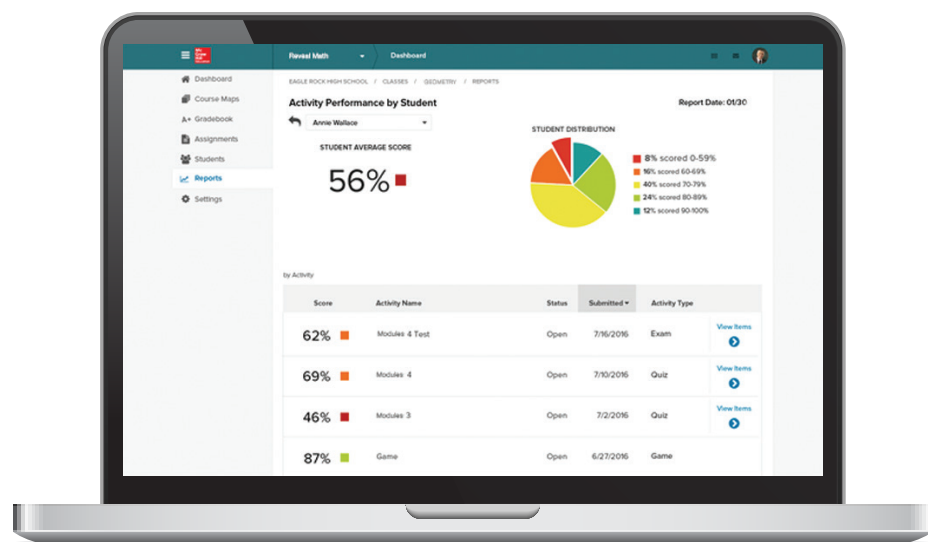


ALEKS®

REDBIRD
MATHEMATICS

Assessment Accountability

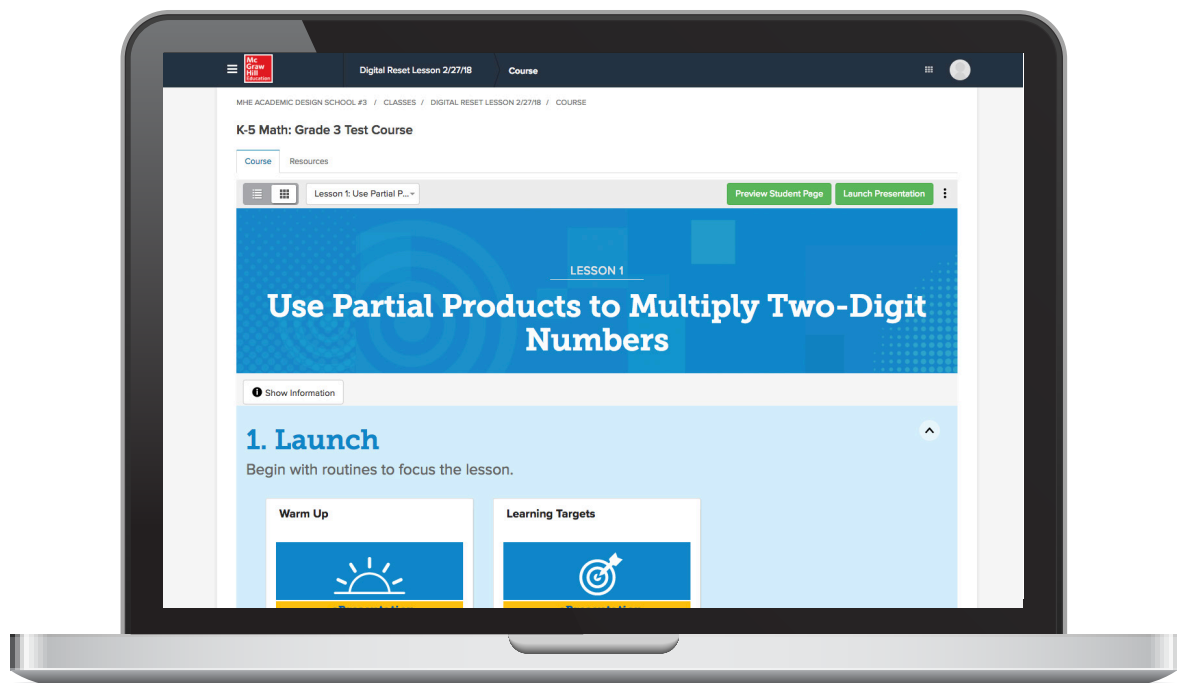
Seamlessly integrates multiple assessment points into snapshot reports that illustrate how students and schools are progressing toward learning benchmarks and goals. Clear visibility of progress enhances the ability to maintain and increase district educational excellence.



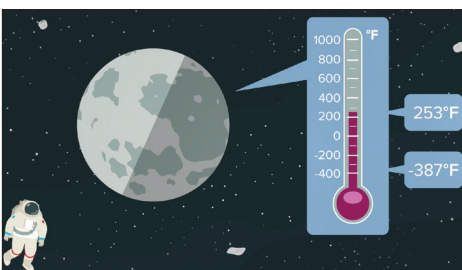
Snapshot Report

Technology WITH A PURPOSE

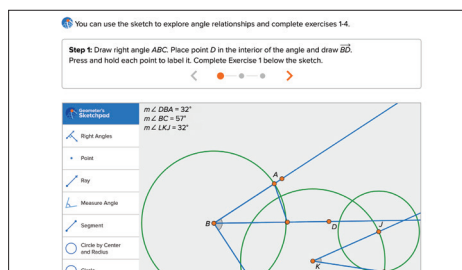
No matter the depth of district digital capability, having a program that blends the lines between digital and print is essential.



Engaging resources like videos and Web Sketchpad activities assist to explain concepts and visualize abstract math concepts.



6–12 Course Videos



K–5 STEM Career Kid Video

Technology Tools for a Smooth Digital Transition

Tech-easy Implementation

Ensures easy program implementation to match varying levels of digital growth among buildings and classrooms. Easy-to-use, embedded interactive tools, and auto-scored assessment will win over students and teachers alike.

Better Data, Better Decision Making

Supports the needs of administrators, teachers, and learners, with easily accessible data and robust reporting that sets the foundation for team collaboration and progress planning. Allows for complete classroom success planning by providing real-time progress.



Intervention

WITH A PURPOSE



Complement *Reveal Math* with the *Arrive Math Booster* K-8 to ensure a seamless connection for students who need intervention support and teachers who strive to meet the needs of all learners.

Accommodating All Learning Styles

Meet every student at their level and provide the appropriate amount of support or challenge they need to be successful, confident mathematicians. Accommodate various learning styles by:

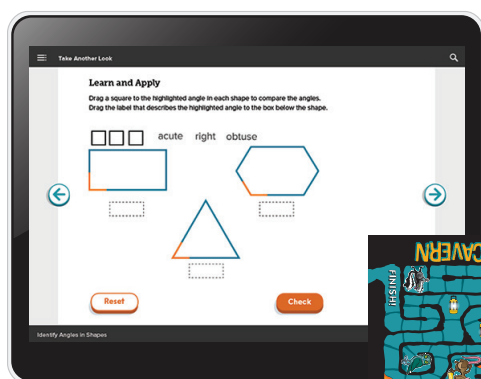
- Extending the teacher's reach through data-collecting, digital, mini-lessons;
- Supporting kinesthetic learning through hands-on small-group lessons;
- Providing opportunities for fluency practice and discourse through purposeful game play.

Convenient

Access to kindergarten through eighth grade content in one subscription. Supplement core instruction easily with 15-minute paced activities.

Targeted

Employ full modules of resources to target any standard from kindergarten through eighth grade. Target individual skills through single skill-based lessons.



Gameboards



Professional Development

WITH A PURPOSE

Leaders in education constantly strive to improve themselves and their practices. To ensure teacher and student success, McGraw-Hill Education offers online and in-person training, giving our teachers a deep knowledge of effective implementation strategies and instructional practices.

Professional Learning

Make connections from *Reveal Math* and *Arrive Math* instruction to professional learning opportunities with advice from our expert advisor team on mathematical research-based best-practices.



Reveal MATH™

You believe that ALL of your students can succeed in mathematics. So do we! Let's reveal the power of mathematics together with *Reveal Math*, a complete K-12 core math program and *Arrive Math*, a connected K-8 math intervention program.

Learn more at RevealMath.com