

Social and Emotional Learning Matters

With *IMPACT™* K–5 Social Studies

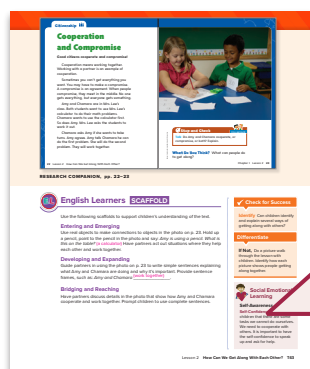



With engaging content geared to today's students, *IMPACT™* K–5 social studies is built around groundbreaking pedagogy that integrates social and emotional learning (SEL) skills to result in better academic and social performance.

Why is SEL Important?

SEL is a practical addition to traditional test-score-focused instruction because of its research-proven effect on improving the learning environment and raising student achievement.

SEL gives children the tools to be effective, productive citizens

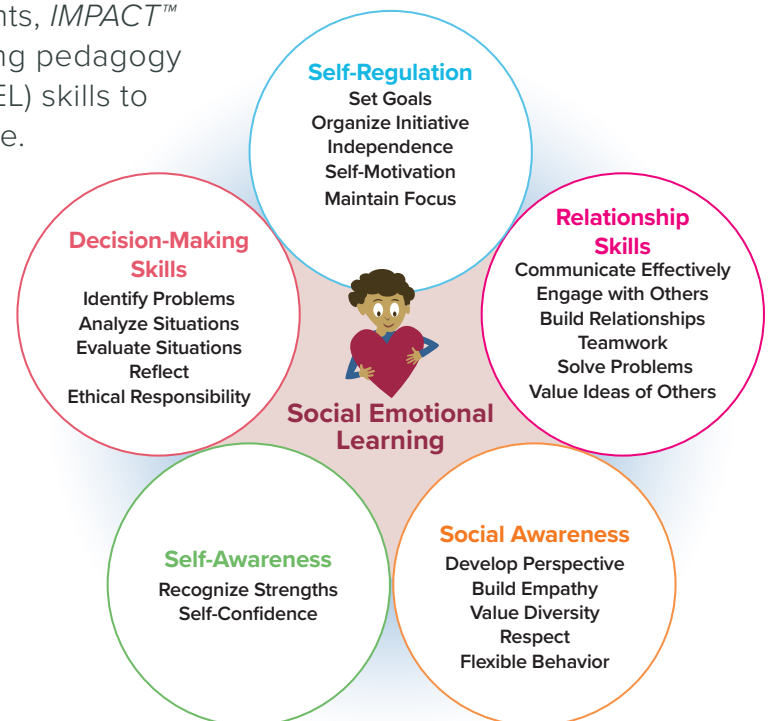




Social Emotional Learning

Self-Awareness

Self-Confidence Remind children that there are some tasks we cannot do ourselves. We need to cooperate with others. It is important to have the self-confidence to speak up and ask for help.



IMPACT™
SOCIAL STUDIES



The Benefits of *IMPACT*[™] Social and Emotional Learning (SEL)

- ♥ Positive social behavior
- ♥ Less emotional distress
- ♥ Stronger parental relationships
- ♥ Improved academic achievement
- ♥ Improved student and teacher attitudes
- ♥ Decreased disruptive behavior in the classroom
- ♥ Teachers act as coaches and mentors of positive behaviors

With *IMPACT*, Your Students Will:

- ♥ Collaboratively determine and implement classroom and school rules.
- ♥ Act as problem-solvers and active contributors in their communities.
- ♥ Use problem-solving skills to address economic, ethical, personal, and historical situations.
- ♥ Talk with each other to evaluate and analyze historical documents, review primary and secondary sources, and consider other viewpoints.

