

## PARENTS' GUIDE: STUDENT REPORTS

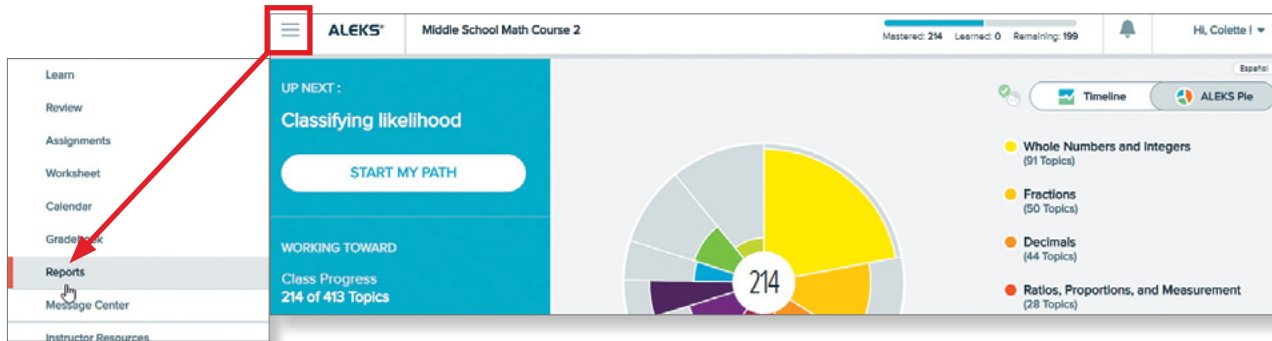
You can access a wide range of reports in *ALEKS* by logging in using your child's credentials:

[www.aleks.com](http://www.aleks.com)

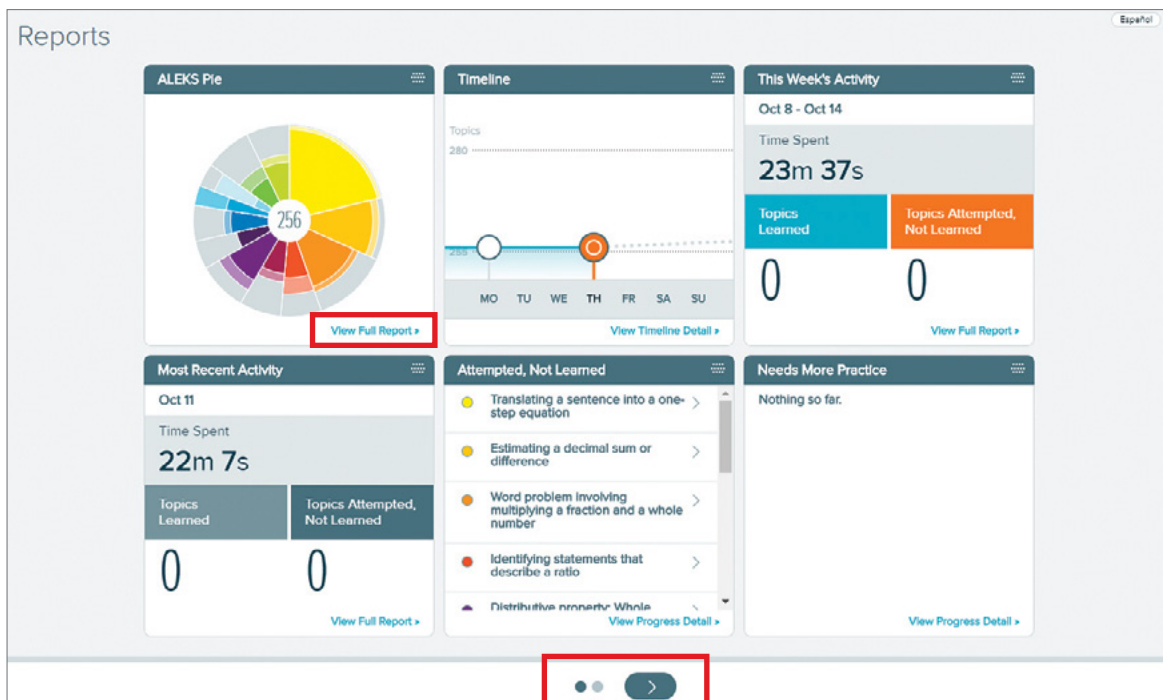
Username:

Password:

Select the **Main Navigation Menu** in the upper left corner and then select **Reports**.



The **Reports** dashboard displays quick overviews of important data applicable to your child's progress in *ALEKS*. You can move the tiles around by selecting the icon in the upper-right corner of a tile and dragging/dropping it into a new position on the page. Choosing the arrow at the bottom of the page will navigate to a second page of report tiles. Selecting **View Full Report** on a tile will give you more detailed information about that report.



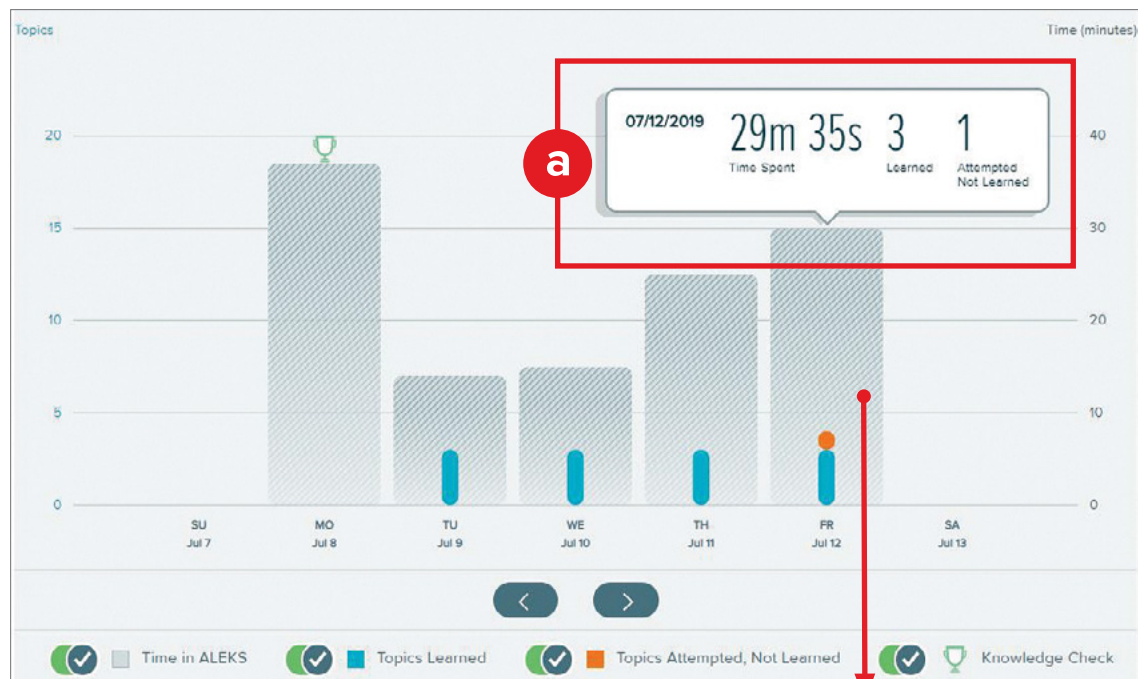


## Time and Topic Report

Launch this report from the tile entitled **This Week's Activity**. Click **View Full Report**.

This report gives a daily breakdown of *ALEKS* usage. The view can be adjusted to a weekly, monthly, or cumulative view or a specific range. The height of the bar represents total login time. A helpful key is located at the bottom of the chart.

- Hover over a bar to see how much time was spent and which topics were attempted and learned on a given day.
- Select a bar to view the Learning Sequence Log for that day, which shows the sequence of actions followed to learn the topic, including the exact problems practiced and the answers entered.



Date	Total for this Period
10/05/2018	2 Learned   3 Attempted, Not Learned   24m 40s

Duration	Topic
6:36 PM   2m 22s	Operations with absolute value: Problem type 1
6:40 PM   5m 25s	Word problem involving the least common multiple of 2 numbers   Learned
6:46 PM   2m 29s	Area of a piecewise rectangular figure
6:49 PM   4m 28s	Word problem with multiplication of two decimals   Learned
6:55 PM   1m 35s	Translating a sentence into a one-step equation





# Understanding the Learning Sequence Log

Hover over a problem icon for detail, and then click to see the question, the answer, and the answer your child submitted.

The screenshot shows the Learning Sequence Log on the left and a detailed view of a problem on the right. The log lists several topics with their durations and status. A red box highlights an 'Incorrect' icon for the topic 'Area of a piecewise rectangular figure' at 6:46 PM. A red arrow points from this icon to the detailed view on the right. The detailed view shows the problem title 'Area of a piecewise rectangular figure', an 'Incorrect' status with the message 'Your answer is incorrect.', the submitted answer '12 in<sup>2</sup>', and the correct answer '30 in<sup>2</sup>'. Below this is the question text 'Find the area of the figure. (Sides meet at right angles.)' and a diagram of a piecewise rectangular figure with dimensions: top side 9 in, left side 5 in, bottom-left vertical side 3 in, bottom-right vertical side 5 in, and bottom side 4 in.

**Tip:** Using a designated space like an *ALEKS* journal or notebook is recommended so that an instructor can cross-reference your child's work, if needed, to provide support.

## Time and Topic Report Icon Key

-  **Learning Page Icon:** This icon is always shown at the beginning of a topic that is NEW to the student. If you don't see this icon, the student has previously attempted the topic.
-  **Explanation Page Icon:** This icon indicates that the student clicked for an explanation. If you see this icon after the same problem is answered incorrectly twice, *ALEKS* automatically launched the explanation.
-  **Correct** answer
-  **Incorrect** answer

If the **Incorrect** icon shows as the last question in a topic, click it for more information:

**Incorrect**  
01/22/2021 | 1:57 PM | 0m 14s

*Incorrect* on the last question indicates that the student chose to log out or move to a different topic.

**Failed**  
01/22/2021 | 1:55 PM | 0m 6s

*Failed* on the last question indicates that *ALEKS* suggested the student move to a different topic.



**Learned**

**Learned Icon:** This icon indicates that the topic was practiced successfully in Learning Mode and will be assessed on the next Knowledge Check.

# Progress History Report

Usually found on the second page of the Reports dashboard.

This report shows your child’s progress on Knowledge Checks and in Learning Mode. The default tab is **Current Class**, but you can choose the **All Classes** tab to see historical data.

- a. The dark blue portion of the bar shows the content mastered based on the most recent Knowledge Check.
- b. The light blue portion of the bar shows the progress made in Learning Mode since the last Knowledge Check.
- c. The gray portion of the bar shows the content remaining to be learned.

