

My
MATH
Learning System

Alabama
McGRAW-HILL



Maximize Every Moment for Every Student



The *Alabama McGraw-Hill My Math* Learning System provides an easy and flexible way to diagnose and fill gaps in understanding. It offers best-in-class resources and instructional strategies. Actionable data personalizes learning to accelerate instruction, target each student's learning, and ensure success on Alabama Course of Study: Mathematics Assessments.



Three main pillars pair with modes of instruction to support various classroom setups.

- ◆ **Engage** with standards-based, grade-level instruction for all.
- ◆ **Target** instruction for differentiation focuses on skill development and addresses gaps in understanding with digital and hands-on opportunities.
- ◆ **Personalize** learning for every student to prepare, remediate, and accelerate.

Strong Equitable Instruction

Modes of Instruction

Whole Group Instruction

Allows all students to access the standards-based instruction of on-level concepts and mathematical practices.

Collaborative Learning

Promotes peer-to-peer collaboration and discussion through cross-curricular activity cards, problem-solving games, hands-on games, graphic novels, projects, worksheets, and My Learning Stations.

Small Group Instruction

Differentiates instruction to reinforce conceptual understanding of skills not yet mastered or to extend a skill or concept beyond grade level through hands-on lessons, EL support lessons, extension lessons, small group games, and My Learning Stations.

Adaptive Learning

Provides math instruction through online, rigorous, adaptive technology with integrated STEM themes and digital project-based learning.

Independent Practice

Allows for the application of skills across multiple modalities through purposeful practice activities, including eTools/virtual manipulatives, assignable digital mini-lessons, digital games, real-world problem-solving readers, graphic novels, projects, and worksheets.

Using Data to Drive Instruction

Having objective, insightful classroom data can drive you to make decisions at the appropriate moment and propel all students forward. Our *Alabama McGraw-Hill My Math* Learning System can help you challenge your students in ways that inspire them to embrace the power of math through real-world connections and applications.

The *Alabama McGraw-Hill My Math* Learning System provides a variety of data collection opportunities to inform instruction.

- ◆ **Formative and summative assessments** updated to include AL standards tagging with Alabama specific questions. These track progress and provide alerts on students who need targeted instruction.
- ◆ **Grouping suggestions** support effective classroom management.
- ◆ **Data checks** measure the effectiveness of targeted instruction.



How **Modes of Instruction**
Can Support Three Popular
Instructional Models

Balanced Instruction



Whole Group

Small Group
Instruction

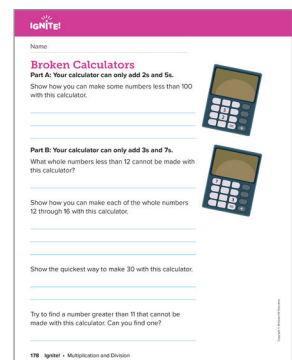
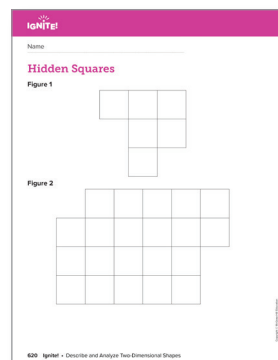
Independent
Practice

Collaborative
Learning

Alabama McGraw-Hill My Math empowers you to implement your instruction in a variety of ways by offering an instructional model that can be easily configured to fit your classroom.

Benefits

- ◆ Allows teachers to drive rich mathematical discourse among students.
- ◆ Allows for multiple delivery methods (print or digital).
- ◆ Integrates open opportunities for students to explore with teacher guidance to make connections from concrete to procedural.





Differentiation

Small Group
Instruction

Collaborative
Learning

Independent
Practice

Adaptive
Learning

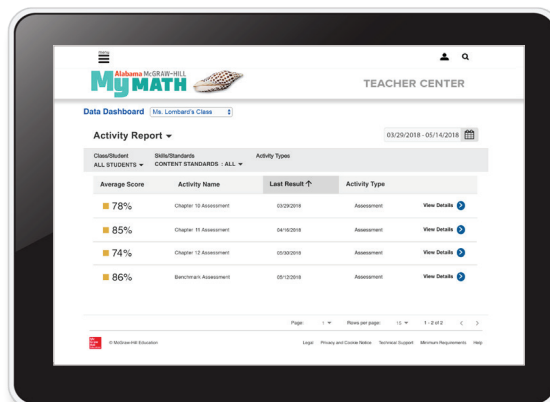
Implementation Considerations

- ◆ Establish rotating groups to extend and reteach.
- ◆ Allow students to work in small groups or independently.
- ◆ Incorporate student choice days to help entice learners and keep them engaged.

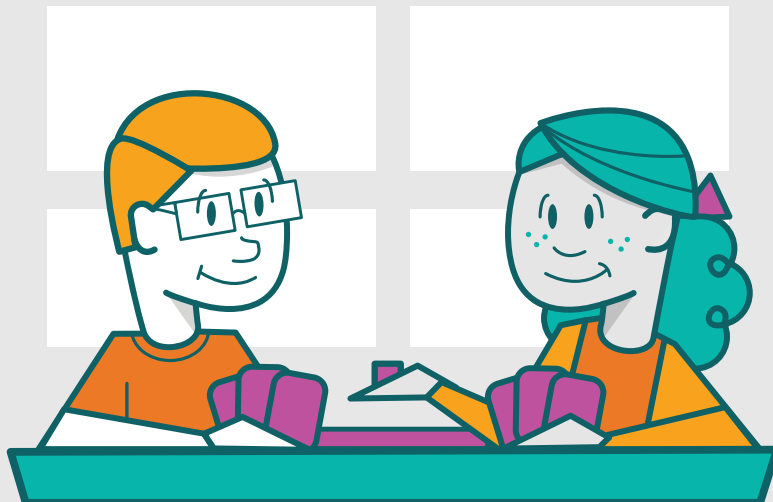
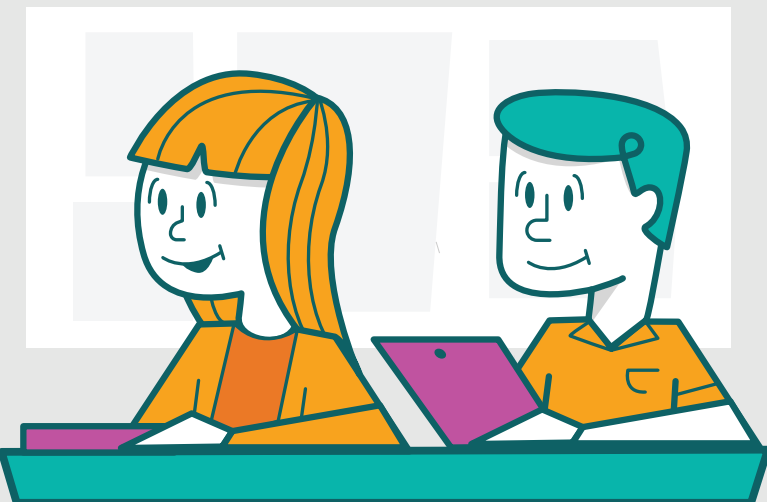


Use of Data

By drawing on results from student assessments and activities, the Data Dashboard provides teachers with specific recommendations to reteach and enrich, making planning and grouping timely and effective.



Guided Math



Instruction

Small Group
Instruction

Adaptive
Learning

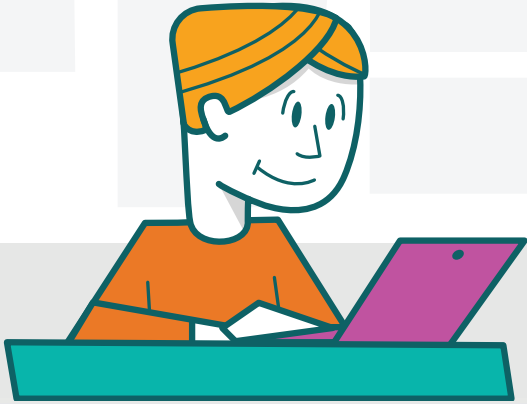
The *Alabama My Math* Learning System supports guided math and other workshop models. Student understanding of essential mathematical concepts is guided through flexible activities, lessons, and meaningful discussions that support and enrich skills.

Benefits

- ◆ Promotes student ownership of learning.
- ◆ Empowers teachers to ask insightful questions.
- ◆ Engages students to stay focused and participate in meaningful learning moments.
- ◆ Personalizes instruction through effective small group instruction and adaptive technology.

Talk MATH

Is it possible for a number to be rounded to the nearest ten and to the nearest hundred and result in the same rounded number?



Practice and Application

Collaborative
Learning

Independent
Practice

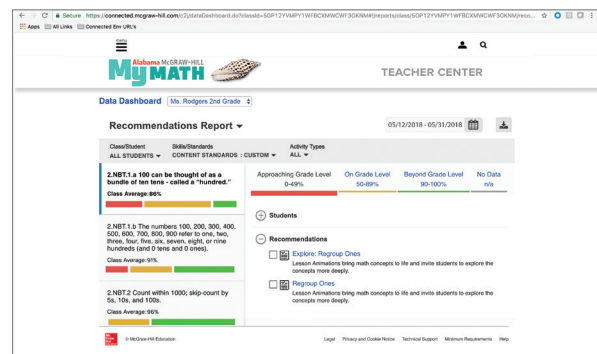
Implementation Considerations

- ◆ Incorporates fluency stations that teach with games and independent activities.
- ◆ Provides opportunities to set up multiple work stations to vary instruction
- ◆ Incorporates student-choice opportunities
- ◆ Establishes an ongoing classroom routine and expectation



Use of Data

Recommendation Reports from the Data Dashboard provide opportunities to reteach and reinforce grade-level content along with enrichment.



Blended Learning



Teacher-Led

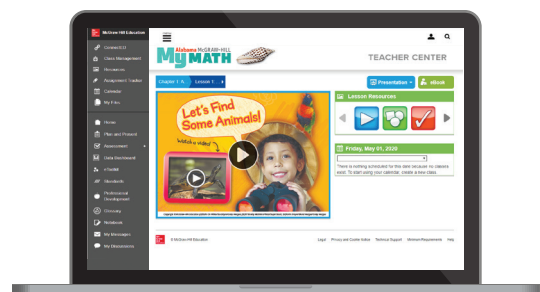
Whole Group
Instruction

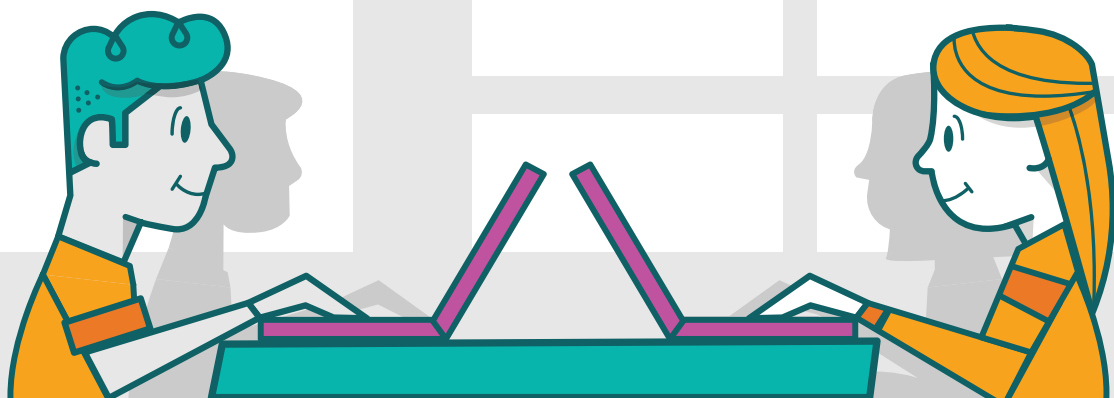
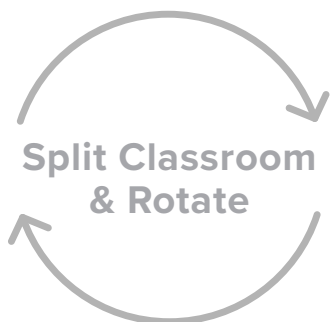
Small Group
Instruction

The *Alabama My Math* Learning System supports blended learning using purposeful teacher-led instruction and digitally-delivered adaptive instruction in a rotation model.

Benefits

- ◆ Decreases the student-to-teacher ratio during instruction.
- ◆ Enables the teacher to better observe and assess for understanding.
- ◆ Ensures students learn within their zone of proximal development.
- ◆ Allows teachers to make instructional accommodations tailored to the needs of each student.





Student-Driven

Adaptive Learning

Independent Practice

Collaborative Learning

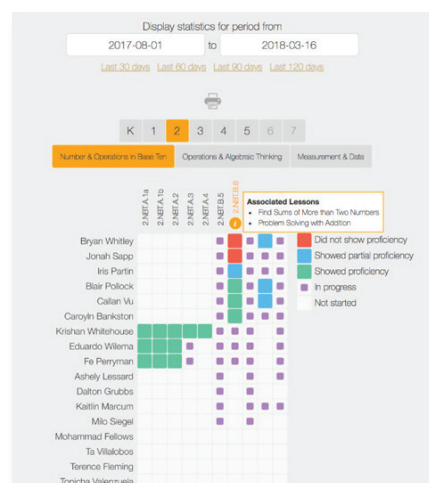
Implementation Considerations

- ◆ For co-teaching, consider a parallel approach.
- ◆ Teachers can split the class and implement a rotation.
- ◆ Teachers can utilize the mini-lessons and resources available to individualize and adjust instruction for each group.



Use of Data

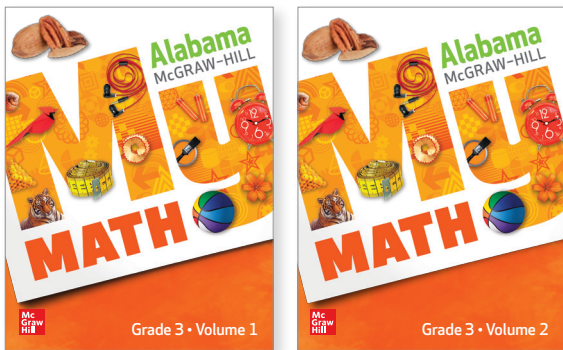
The Data Dashboard and personalized learning data can help group students effectively and provide insights into how they learn best, helping to inform instructional strategy.



Engage

Engagement has a primary role in productive struggle. *Alabama McGraw-Hill My Math* Learning System ignites curiosity in mathematics by motivating students to do the work and start wondering.

Two-Volume Student Editions



Includes Alabama specific content to meet all of your standards.

Chapter Performance Tasks

Name _____ Date _____

Score _____

Performance Task

Bright Ideas

Students in the Bright Ideas club sell various items. The table shows the items they sell and the number they ordered during October.

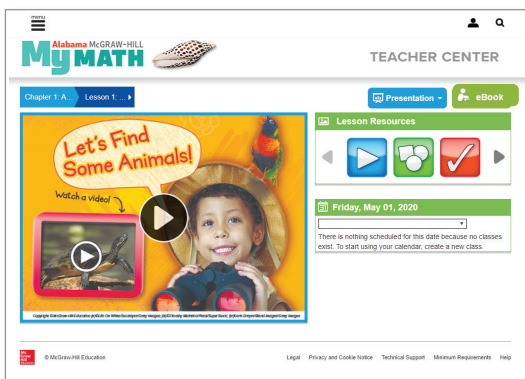
Show all your work to receive full credit.

Item	Number Ordered	Cost per Item
light bulbs	56	\$8
box of nightlights	36	\$3
box of solar lights	24	\$6
box of LED lights	32	\$15

Part A

Includes questions on the updated Alabama standards.

Chapter Videos



Ignite Activities

Name _____

Hidden Squares

Figure 1

Figure 2

Broken Calculators

Part A: Your calculator can only add 2s and 5s.

Show how you can make some numbers less than 100 with this calculator.

Part B: Your calculator can only add 3s and 7s.

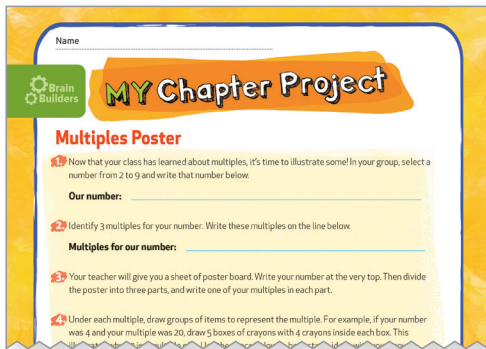
What whole numbers less than 12 cannot be made with this calculator?

Show how you can make each of the whole numbers

“Our district includes students from 27 different countries. The vocabulary cards are a tremendous help for the ELL students to understand the lessons. I love how it has room on the page to work a problem, take notes, etc. It’s great because they don’t have to flip back and forth.”

Teresa G., 5th-Grade Math Teacher

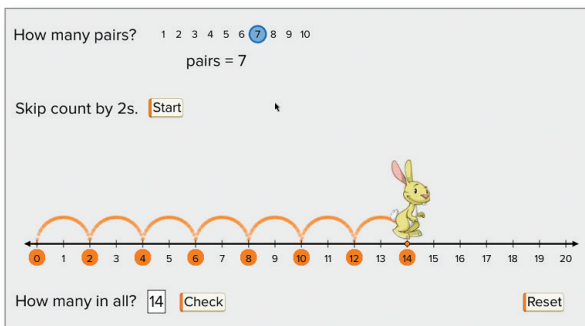
Chapter Projects



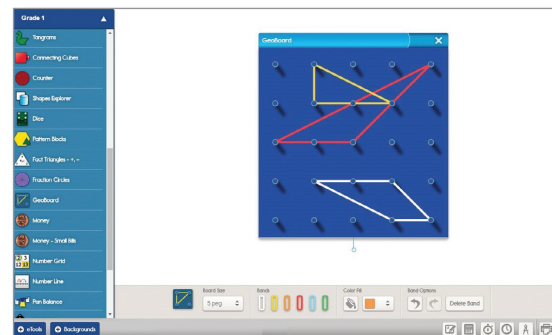
Foldables and Vocab Cards



Geometer's Sketchpad® Activities



eTools

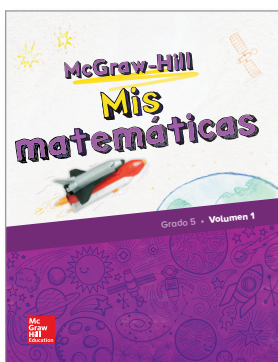


Redbird™ Games



Target

Accommodating diverse learning needs is challenging for one teacher among many students. *Alabama McGraw-Hill My Math* Learning System includes the resources to target each students' needs, driving all students towards algebra readiness.



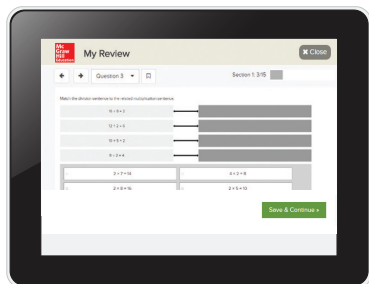
ELL & Spanish

- ♦ English Language Learner interactive guides
 - *Visual Kinesthetic Vocabulary*®, language acquisition strategies, and scaffolded activities for three levels (Teacher)
 - Vocabulary, note-taking skills, and language acquisition strategies (Student)
- ♦ *Mis matemáticas* (Spanish edition available in print and digital)
- ♦ Spanish Real-World Problem Solving Readers
- ♦ My Learning Station Spanish games, activity cards, and problem-solving cards
- ♦ Spanish 21st Century Assessments
- ♦ Spanish digital student and teacher center
- ♦ Spanish teacher presentation slides



Differentiation

- ♦ Real-World Problem Solving Readers (On-, Approaching-, and Beyond-Level)
- ♦ My Learning Stations
- ♦ Classroom manipulative kit
- ♦ Targeted strategic intervention guide (online resource)



Assessment

- ♦ 21st Century Assessment
- ♦ Online assessment and Data Dashboard reporting
- ♦ Leveled chapter tests
- ♦ Benchmark assessments
- ♦ Twenty-week countdown to the state assessment
- ♦ Performance tasks

Personalize

Personalized learning ties data insights to tailored differentiation. Use *Alabama McGraw-Hill My Math* Learning System to continuously assess understanding and deliver a unique learning trajectory that is based on each student's responses.



Targeted Instruction

- ◆ K–8 skill-based lesson library
- ◆ K–8 Classroom Games Kit



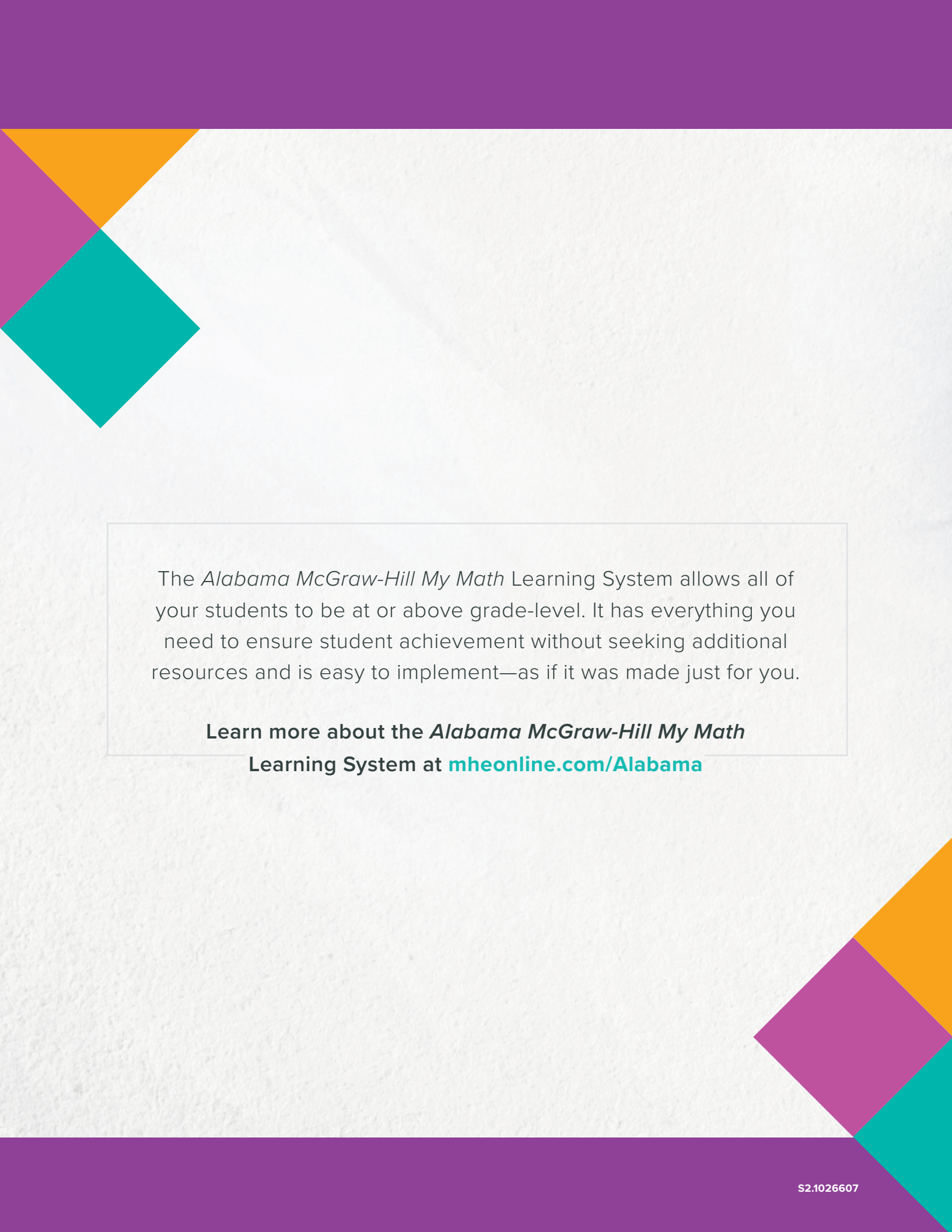
Personalized Learning

- ◆ Adaptive, personalized, student-driven instruction
- ◆ Teacher data and management center

“Assessments are available in the form of readiness checks, pre-tests, check your progress, many chapter tests, and benchmark assessments covering multiple chapters. We also like the performance tasks that provide excellent practice for new testing.”

Renee R., K–12 District Math Curriculum Coordinator





The *Alabama McGraw-Hill My Math* Learning System allows all of your students to be at or above grade-level. It has everything you need to ensure student achievement without seeking additional resources and is easy to implement—as if it was made just for you.

Learn more about the *Alabama McGraw-Hill My Math*
Learning System at mheonline.com/Alabama