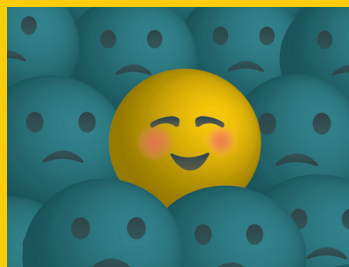


Anatomy & Physiology



Share your Connect happiness:
bit.ly/InstructorHappiness

#MHEhAPpiness

Nahel Awadallah

Director of Programs (*Natural Sciences, Health, & PE*)

Biology Instructor/Advisor

Johnston Community College

My experience using Connect was...

“Phenomenal. The time and resources invested in creating this platform along with the adaptive learning technology is unmatched. The adaptive technology is supported with assessments and an interactive “SmartBook” that creates an active learning environment supporting student learning. My courses are transformed from a static teaching environment to an engaging learning environment. **It is, simply, the best.**”

Connect made me happy because...

I spend less time on grading and designing assessments and more time on teaching and creating an active learning environment. Students’ retention and performance improved significantly. In addition, it is an easy platform to use and the most advanced.”

I chose Connect because...

“It is a single package that includes the most advanced learning technology available in the market. From assessments to assignments to adaptive learning to full classroom learning management, “Connect” is the best platform a faculty needs to improve students’ retention and performance.”

Connect helped me improve my course by...

“**1.** Tailoring my lectures to help students understand difficult topics based on feedback from Connect assessments. **2.** Giving students targeted help during my office hours based on their Connect reports. Reports identify areas of improvements that students need to review to successfully pass the course. **3.** Increasing student engagements in the courses during lectures. **4.** Flipping my class for many topics and it allows me to add more critical thinking activities. **5.** Integrating case studies during laboratory sessions. **6.** Integrating anatomy and physiology revealed (AP Revealed) in my laboratory and lecture sessions. AP Revealed is best virtual cadaver dissection software that a faculty can use in lecture and lab. It is phenomenal.”

