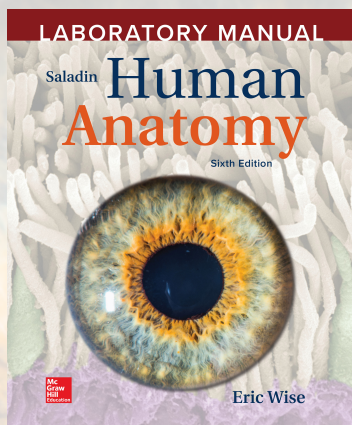


New Features You'll See in Wise's Laboratory Manual to accompany Saladin's Human Anatomy, 6e

©Shutterstock/Monkey Business Images



Title: Laboratory Manual to accompany Saladin's Human Anatomy, 6e

Author: Eric Wise

ISBN: 1260399761/
9781260399769

- 1 **Exercise 1**— Minor changes made to text and figures for clarity, with two new Review questions covering directional terms
- 2 **Exercise 2**— Revised Introduction for improved discussion of resolution; new section on dissection microscopes; added description of parfocal; three new Review questions
- 3 **Exercise 3**— Terminology updated for 'membranes' to 'cellular membranes' and 'cisternae' to 'cisterns'; two new Review questions
- 4 **Exercise 4**— Introduction now includes the detailed process of preparing microscope slides; changed 'transitional epithelium' to 'uroepithelium', 'cardiocytes' to 'cardiomyocytes', 'leukocyte' to 'leucocyte'; added additional references to apical surface and basal surface of epithelium; one new Review question
- 5 **Exercise 5**— Rearranged parts of the section on dermis; changed 'piloerector muscle' to 'arrector muscle'; one new Review question

New Features You'll See in Wise's Laboratory Manual to accompany Saladin's Human Anatomy, 6e

- 6 Exercise 6**— Changed 'epiphyseal' to 'epiphysial'
- 7 Exercise 7**— Changed 'sphenoid sinus' to 'sphenoidal sinus', 'ethmoid sinus' to 'ethmoidal sinus', 'hypophyseal' to 'hypophysial', and 'fontanels' to 'fontanelles'; two new Review questions, including a drawing and labeling question
- 8 Exercise 8**— Added 'kyphosis' and 'lordosis' to curvatures; changed 'kyphosis' to 'hyperkyphosis' and lordosis to 'hyperlordosis'; added a drawing and labeling exercise for the sacrum in Review section
- 9 Exercise 9**— Minor text changes; two new Review questions
- 10 Exercise 11**— Changed 'frontalis' and 'occipitalis' to 'frontal belly', changed 'occipital belly' to 'occipitofrontalis', and changed 'transversus abdominis' to 'transverse abdominal'; one new Review question; one Review figure revised to grayscale for students to color in the origin and insertion
- 11 Exercise 12**— Changed 'external abdominal oblique' and 'internal abdominal oblique' to 'external oblique' and 'internal oblique', respectively; modified two Review figures to grayscale to allow students to color in origins and insertions
- 12 Exercise 13**— Added a grayscale figure for students to label and color in origins and insertions
- 13 Exercise 14**— Modified a Review figure to grayscale for students to color in the origins and insertions
- 14 Exercise 15**— Reworded sections of text for clarity; changed 'cell body' to 'neurosoma' and 'neurolemmocyte' to 'neurilemmocyte'; added 'myelin sheath gaps' as synonymy for 'nodes of Ranvier'; added a functional question in Review section
- 15 Exercise 16**— Changed 'lumbar' to 'lumbosacral' enlargement; added a new Review figure of spinal cord to label and added a new Review question
- 16 Exercise 17**— Coverage of blood supply to the brain has been moved to the circulatory exercises; deleted text on sensory and motor homunculus; expanded sheep brain dissection; modified some Review questions
- 17 Exercise 18**— Revised Learning Objectives section; moved olfactory transmission from Introduction; expanded the section 'Transmission of the Sense of Olfaction to the Brain'

New Features You'll See in Wise's Laboratory Manual to accompany Saladin's Human Anatomy, 6e

- 18** **Exercise 20**— Changed 'leukocytes' to leucocytes'; added a section on the use of oil immersion lenses
- 19** **Exercise 21**— Changed 'tricuspid' to 'right atrioventricular' valve and 'mitral' to 'left atrioventricular valve'; added numbers to sheep heart dissection procedure; changed 'sinoatrial' to 'sinuatrial'; added 'conducting cardiac myofibers' as synonym to 'Purkinje fibers'
- 20** **Exercise 22**— Colored blood vessels (red or blue) are added to cadaver images; this exercise now includes arteries that go to the brain
- 21** **Exercise 23**— Colored blood vessels (red or blue) are added in cadaver images; changed 'dorsal pedal artery' to 'dorsal artery'
- 22** **Exercise 25**— Updated function of uvula to reflect current understanding; changed 'trachealis muscle' to 'trachealis'; modified several Review questions to higher-order questions, and added a new labeling figure
- 23** **Exercise 26**— Added a new photograph of a sagittal section of the head; changed 'cementum' to 'cement', 'cardiac region' to 'cardiac part', and 'pyloric region' to 'pyloric part'; added 'ileal papilla' as synonym to 'ileocecal valve'; added a Review illustration for labeling
- 24** **Exercise 27**— Changed 'transitional epithelium' to 'uroepithelium'; added a Review question on filtrate
- 25** **Exercise 28**— Changed 'glans' to 'glans of the penis'; described the erectile tissue as sections rather than cylinders
- 26** **Exercise 29**— Added 'preovulatory' as synonym for 'graafian' follicle; revised several Review questions