

# Professional Learning Opportunities: Session Descriptions and Outcomes



## 1.0 Foundation: Launch with ALEKS (Grades 3-12)

Designed for teachers using *ALEKS* to support personalized learning, this session explores how the new and improved features support instruction, equity, engagement, and acceleration for all students and perfectly support your student-centered blended learning model. Grounded in knowledge space theory, the *ALEKS* digital learning platform provides an individualized and asset-based learning pathway unique to each learner. Customized sessions are available at the Launch with ALEKS level.

### Participants will learn how to:

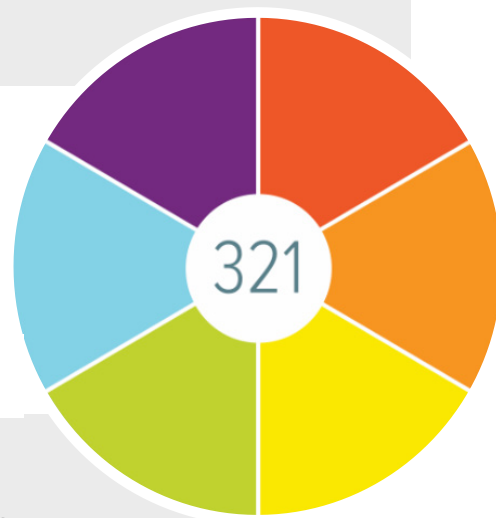
- ✓ Prepare to support students with personalized and asset-based learning.
- ✓ Discuss and share recommended instructional practices that support effective, engaged, and equitable students learning experiences with *ALEKS*.
- ✓ Support student learning pathways and consider quality instructional practices to support student learning.
- ✓ Locate data reports, integrate textbooks, and customize assignments and modules.

## 2.0 Foundation: Best Practices with ALEKS (Grades 3-12)

Designed to empower teachers to motivate and engage students using *ALEKS*, this session explores the embedded resources used to scaffold instruction, provide feedback to students, and monitor their progress. Customized sessions are available at the Best Practices with ALEKS level.

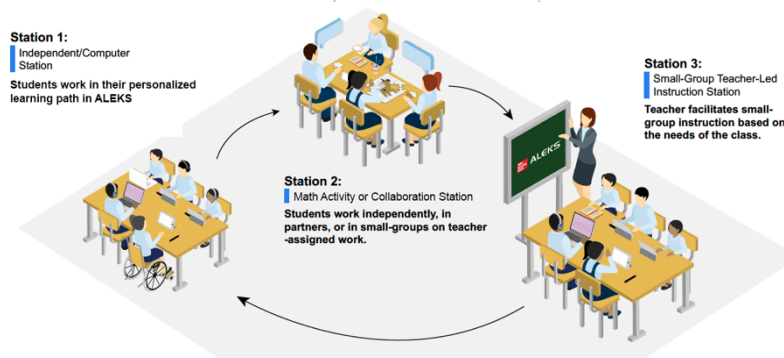
### Participants will learn how to:

- ✓ Examine the *ALEKS* Teacher Dashboard to determine next steps for whole class, small-group rotation, and individual instruction.
- ✓ Review how to best utilize the *ALEKS* reports to monitor and motivate learning.
- ✓ Determine the best methods for setting goals to motivate and empower student learning.
- ✓ Learn to customize the *ALEKS* experience for students by easily editing the content or integrating one of several textbook offerings.
- ✓ Discover opportunities to spot-check skills and strategies through the assignment and homework features in *ALEKS*.
- ✓ Consider additional supports for students who quickly master their *ALEKS* Pie or for those who may need additional remediation.



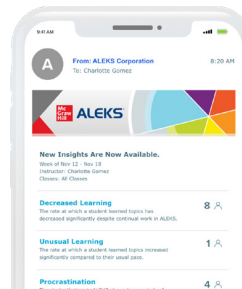
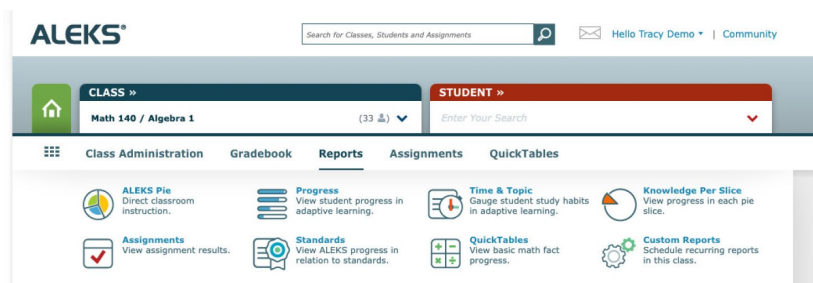
### 3.0 Application: Personalized Learning + Developing Student Ownership of Data with ALEKS

Designed to empower teachers to personalize learning and develop student ownership of data, participants will develop strategies and tools to shift from one-size-fits- all teaching to flexible, data-driven instruction based on student needs. Customized sessions are available at the Personalized Learning + Developing Student Ownership of Data with ALEKS level.



#### Participants will learn how to:

- ✓ Dive into the *ALEKS* student reports to develop student awareness, motivation, and understanding of their time and progress in *ALEKS*.
- ✓ Provide targeted support and formative feedback throughout the student-centered classroom.
- ✓ Discover the Insight Reports that can alert the instructor when there is unusual learning occurring for individual students and determine next steps for intervention and student ownership of data.
- ✓ Support students in reflecting on the impact of their *ALEKS* learning choices and planning for next steps in their learning.
- ✓ Support students in engaging in data discussions around their academic growth and progress using the Student Dashboard.



### 4.0 Application: Creating a Student-Centered Classroom: Personalized Learning and Student Agency with ALEKS (powered by Dr. Catlin Tucker)

Designed to empower teachers to use blended learning to support personalized learning goals, participants will develop strategies and tools to promote individualized learning experiences and pathways to accelerate progress for each learner. Customized sessions are available at the Creating Student-Centered Classroom: Personalized Learning and Student Agency with ALEKS level.

#### Participants will learn how to:

- ✓ Review instructional resources and data to support the development of student agency.
- ✓ Support students in engaging in academic discourse centered on *ALEKS* articles and topics.
- ✓ Involve students in learning experiences that allow for student choice using a variety of methods.
- ✓ Give students the opportunities to provide feedback on instruction and classroom culture.

#### Administrative Track

Support for instructional leaders at the school and district level  
As an educational leader I can:

- Promote effective, equitable, and engaging learning environments through active progress monitoring of student data and active promotion of quality instructional practices.
- Articulate instructional parameters and implement them with intentionality.

#### Job-Embedded Supports

- Elevate job-embedded learning through observation, coaching, facilitated planning sessions, learning/literacy walks, development of informed parent/guardian learning partnerships, and support for Professional Learning Communities.

